

HONOR AWARD

Towers | Golde, LLC New Haven

Calhoun College: Revitalizing an Historic Gem New Haven

The twelve residential colleges at Yale University are each organized around a central courtyard. The courtyard at Calhoun College (originally designed by Beatrix Farrand) is the smallest and is therefore subject to unusually intense pressures. The need for renovation and expansion of this 75-year-old residential complex created an opportunity to instill new vitality into its landscape.

This project presented significant aesthetic and technical challenges to the landscape architect. Due to space limitations the building expansion had to be built under the existing historic courtyard, so that half of the ground plane became a roof deck.

The relocation of key building entries also redefined circulation routes.

A formal lawn defined by paths provides the central organizing feature in the courtyard plan and is used for both recreation and formal events. Discreetly located around the periphery are informal spaces of varied scale and intimacy. One such space, the seating circle, occupies a previously overlooked alcove in the courtyard and highlights stained glass windows that had been obscured by overgrown plants.

The varied elevations at the twelve building entries called for a complex grading plan to meet accessibility requirements. Where feasible, steps

and ramps were eliminated; where needed, they were fully integrated into the landscape. Custom designed "Georgian" bike rails were placed



Existing conditions, courtyard entry.



Seating circle.

close to suite entries. The historic bluestone walkways were reinstalled on no-fines concrete base for assured accessibility and durability.

The new planting design for this courtyard was of particular concern to the university due to the Farrand legacy. The landscape architects developed a specifically gardenesque approach to the plan, more akin to Farrand's larger residential projects than to her institutional ones. On the outer perimeter of the buildings, the architectural "moats" were heavily planted to buffer the buildings from adjacent streets and unify the complex with the greater landscape character of Yale University.

- Principal in Charge:** Robert Golde, ASLA
- Landscape Architect:** Natasha Andjelic
- Project Manager:** Channing Harris, ASLA
- Architect:** Newman Architects, New Haven
- Construction Manager:** Dimeo Construction, New Haven
- Site Contractor:** PJ's Construction Co., New Haven
- Irrigation:** Aqualawn, Fairfield
- Masonry:** NER Construction, West Haven
- Mortar and Joint Materials:** Laticrete, Bethany
- Arborist:** The Care of Trees, Hamden
- Plants:** Barton Nursery, Edison, New Jersey
- Benches:** British-American, Downingtown, Pennsylvania; Barlow-Tyrie, Moorestown, New Jersey
- Stone Suppliers:** Indian Country Bluestone, Deposit, New York (Bluestone Paving and Stairs); Connecticut Stone, Milford (Granite Paving); Williams Stone, East Otis, Massachusetts (Granite Planter Curbs)
- Metal Handrails:** Northeast Steel
- Lighting:** Sentry Lighting (Yale Site Lights)
- Photography:** Towers | Golde, LLC

MERIT AWARD

Towers | Golde, LLC New Haven

Envisioning a New Pedestrian District — Stockbridge Corridor Amherst, Massachusetts

This project was commissioned by the University of Massachusetts at Amherst, with the purpose of transforming Stockbridge Road into a pedestrian-friendly corridor linking the new Integrated Science Building (and its proposed expansions) with the new Studio Arts Building. Grounded in ideas set forth by several previous master plans for the east campus, this planning study and preliminary design bring to fruition decades of planning.

The landscape architects focused on signature open spaces and activity nodes linked by a promenade. The

goal was to create a memorable place that enhances the experience and image of the university, encouraging social engagement and connections with the regional landscape, the history of the institution, and the missions of its visual arts and sciences facilities.

This effort also shifted the university's traditionally internal approach to a far more inclusive and iterative process. The team not only reached out to a broad array of potential constituencies but also conducted several design workshops. These sessions engaged faculty and students, whose interest in creating a sustainable landscape helped to shape the university's priorities.

The long-range vision includes phased implementation projects. Phase I would transform the 30-foot-wide asphalt Stockbridge Road into a pedestrian boulevard 18 feet wide, with new lighting and seat-

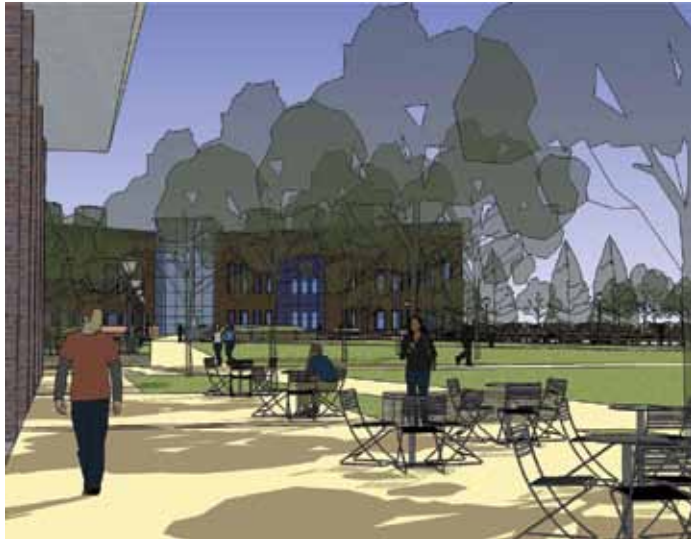
ing, culminating in a grand ceremonial space. This "common," defined at its edges by granite posts and rail fencing, recalls the university's agrarian heritage. It allows for graduation ceremonies, career fairs, concerts, and relaxation. It may also include reconfiguration and regrading of the existing parking lot to incorporate bioswales and connections to new underground detention systems that would capture most of the stormwater from the district.



Conceptual design.

Subsequent phases of the project will complete the vision. The final design expands green space; recommends future building locations, including an expansion of the arts district; locates parking facilities to replace removed parking lots; addresses cross-district circulation; and suggests landscape development around existing buildings.

Principal in Charge: Shavaun Towers, FASLA
Landscape Architect: Natasha Andjelic
Project Manager: Natasha Andjelic
Landscape Designer: Bradley Brochu
Funding Partners: University of Massachusetts at Amherst, Facilities and Campus Planning Division
Consultant Engineers: BSC Group
Photography: Towers | Golde, LLC; historic photos from University of Massachusetts Amherst archives



Proposed dining terrace overlooking the common.



Proposed site plan for Stockbridge Corridor.