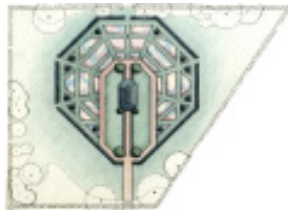




Richard Cheek



**SUNKEN GARDEN
HILL-STEAD MUSEUM**

Towers|Golde's design for the Sunken Garden at Hill-Stead was based on a newly discovered, horticulturally detailed plan (c.1925) from the archives of Beatrix Jones Farrand (1872-1959), one of the country's first landscape architects.

While there is no record that the original was ever executed, T|G's plan is faithful to that design with only a few, carefully researched substitutions with modern perennial hybrids and some minor, but sensitive adjustments to the layout, necessary to accommodate the public usage which, as anticipated, has increased dramatically since restoration.

Hill-Stead is a house museum for the spectacular collection of early 20th century art assembled by the Pope family, whose daughter, Theodate, was one of this country's first woman architects.

CLIENTS	<i>Connecticut Valley Garden Club Garden Club of Hartford</i>
LOCATION	<i>Farmington, Connecticut</i>
PROJECT AREA	<i>1 acre</i>
SITE COST	<i>\$600,000</i>