

**MEDICAL CENTER MASTER PLAN
UNIVERSITY OF KENTUCKY**

Towers|Golde was a member of the design team selected to plan the rapidly expanding University medical campus, the signature element of the state's commitment to leadership in healthcare, research and medical education. T|G performed detailed site analysis, intensive programming and open space planning. Additionally, T|G developed a landscape design manual for use within the entire precinct and as a guide for future developments elsewhere on campus.

The plan recommends solutions to circulation and parking challenges, spatial order and wayfinding, as well as specific treatments for urban streetscapes. The removal of a major traffic artery through the site has resulted in opportunities to develop a hierarchy of open spaces for different user groups within the core of the campus. The "Landscape Design Manual" offers detailed standards for paving, site features, lighting and planting. Implementation of specific projects are now underway.

CLIENT	<i>University of Kentucky</i>
LOCATION	<i>Lexington, Kentucky</i>
PROJECT COST	<i>Phase I: \$750 million</i>
ARCHITECT	<i>GBBN/Ellerbe Becket</i>

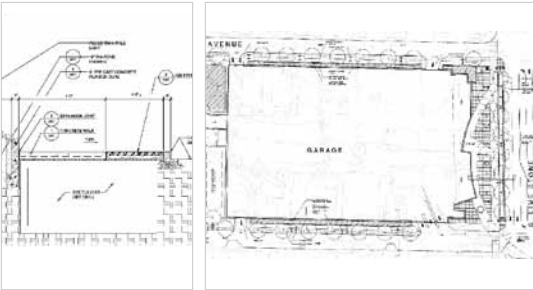


**ALBERT B. CHANDLER HOSPITAL
UNIVERSITY OF KENTUCKY**

The UK Medical Center is an institution reinventing itself as a medical destination for the finest in specialty and subspecialty medical care. In pursuit of this goal, its new Patient Care Facility is a multi-phased expansion to the existing hospital and entails roadway relocations, a new 6000 car garage, twin bed towers, new emergency and materials handling departments, as well as a new lobby. The landscaped forecourt will establish and proclaim the image and prestige of this institution which aims at becoming one of the Top 20 in the nation.

A hierarchy of outdoor pedestrian spaces will accommodate a variety of user groups in plazas, courtyards and roof-deck terraces. Landscape treatments will set new standards for the developing medical area while integrating them with the larger University campus. Additionally, significant efforts have addressed traffic wayfinding, regional storm water management and disaster planning.

CLIENT	<i>University of Kentucky</i>
LOCATION	<i>Lexington, Kentucky</i>
PROJECT COST	<i>\$523 million</i>
SITE COST	<i>\$4.8 million</i>
STATUS	<i>Completion 2010</i>
ARCHITECT	<i>GBBN/Ellerbe Becket</i>



The first phase of the University of Kentucky’s new hospital expansion is this garage, serving visitors, patients, doctors and staff. Ultimately to be linked to the hospital’s lobby via a pedestrian bridge, it replaces a structure being demolished to make way for the new construction.

**MEDICAL CENTER GARAGE
UNIVERSITY OF KENTUCKY**

The site design includes close collaboration with traffic, civil and lighting engineers and addresses regional drainage issues with a new detention basin. The project also incorporated the first use of landscape standards established during the master planning phase, including streetscape setbacks, lighting, planting, furnishings and signage.

CLIENT	<i>University of Kentucky</i>
LOCATION	<i>Lexington, Kentucky</i>
PROJECT COST	<i>\$32.8 million</i>
PROJECT AREA	<i>1 acre</i>
ARCHITECTS	<i>GBBN/Ellerbe Beckett/ AE Kinney</i>