



**RESIDENTIAL COURTYARDS  
YALE UNIVERSITY**

Towers|Golde has been pleased to direct the restoration, enhancement, and expansion of nine sequential residential college renovation projects over the course of what will be almost 16 years. T|G has re-envisioned more than 25 courtyards, as well as numerous ancillary spaces and 10 blocks of downtown streetscape as a part of these projects.

Where new, the site design has been determinedly contemporary. Where historic, the designs have been highly sensitive to the Colleges' neo-gothic and Georgian style and the landscape precedents set by the original designer of most of these courtyards, Beatrix Jones Farrand.

CLIENT	<i>Yale University</i>
LOCATION	<i>New Haven, Connecticut</i>
PROJECT AREA	<i>12 acres</i>
ARCHITECTS	<i>Kieran Timberlake &amp; Harris Kieran Timberlake Associates Perry Dean Rogers Hammond Beebe Rupert Ainge Goody Clancy Herbert S. Newman &amp; Partners</i>
AWARDS	<i>SCUP/AIA-CAE Excellence in Landscape Architecture Honor Award CT Trust for Historic Preservation Award CT ASLA Honor Award BSA/AIA Honor Award, Design Award</i>



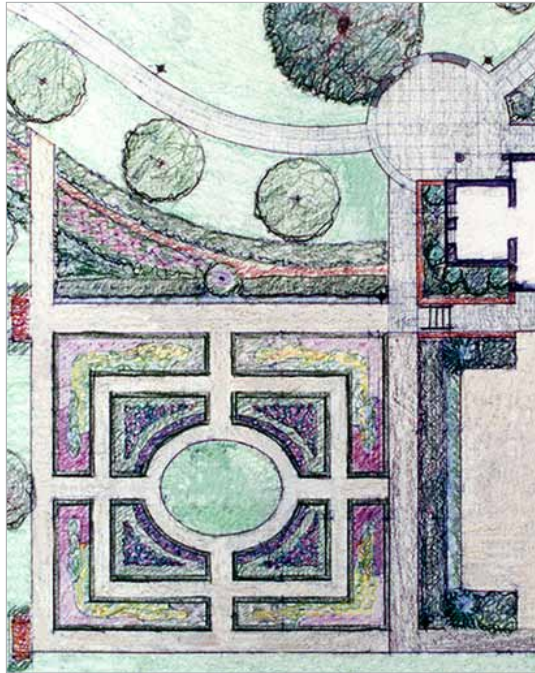
**HILLHOUSE AVENUE  
YALE UNIVERSITY**

In honor of its Tercentennial, Yale commissioned the landscape rejuvenation of upper Hillhouse Avenue to recapture many of the qualities that led Charles Dickens in 1868 to describe it as “the most beautiful street in America”.

Towers|Golde’s efforts focused on the design of period plantings, fencing and lighting within the streetscape and front yards of the fourteen historic homes occupied by the University. While not a strict restoration of any one given historic condition, this renovation does seek to unify the street through the recreation of the romantic landscape advocated by Andrew Jackson Downing as a setting for these unique Victorian homes.

The landscape improvements are based on both a detailed investigation of historic development of the Avenue and its domestic landscapes, in addition to a review of contemporary needs.

CLIENT	<i>Yale University</i>
LOCATION	<i>New Haven, Connecticut</i>
PROJECT AREA	<i>6 acres</i>
SITE COST	<i>\$800,000</i>



Harris



**SKINNER TROWBRIDGE HOUSE  
YALE UNIVERSITY**

When the School of Management at Yale University restored an 1830s Greek revival mansion for use as its Center for International Finance, Towers|Golde was an integral part of the design team in reviving what had been one of New Haven's finest early homes.

While the grounds and gardens had been developed in many different styles over the years, this garden was restored based on plans from the early 1920s. Designed by the landscape architect Marian Coffin, the garden's central feature was a formal boxwood-edged knot garden of perennials and flowering shrubs. The scheme provides purple, mauve and blue blooms throughout the season in the single-color style popularized by the British garden designer, Gertrude Jekyll.

CLIENT	<i>Yale University</i>
LOCATION	<i>New Haven, Connecticut</i>
PROJECT COST	<i>\$4 million</i>
SITE COST	<i>\$400,000</i>
ARCHITECT	<i>Helpern Architects</i>



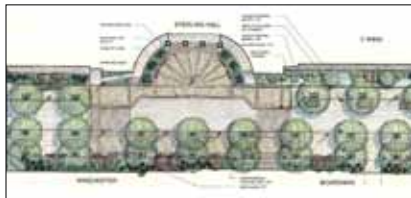
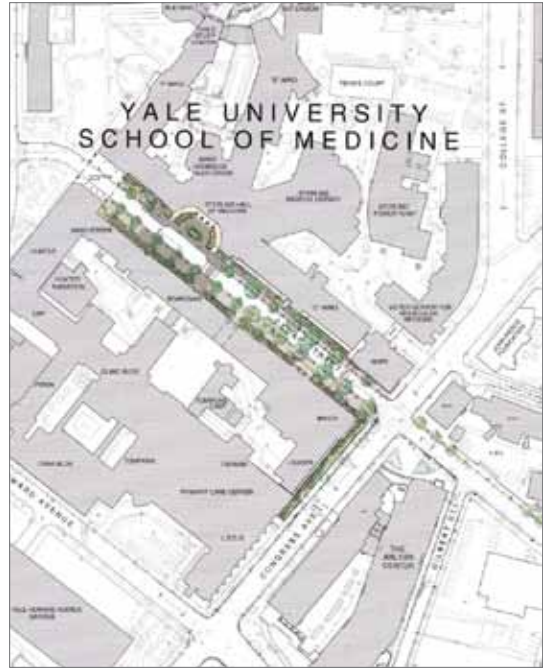
**ARTS AREA PLANNING STUDY  
YALE UNIVERSITY**



This planning study tested the feasibility and costs of creating a recognizable precinct within Yale’s urban campus, an arts area comprised of existing, expanded and relocated arts facilities.

Towers|Golde’s site design connects the sometimes vestigial interior open spaces to create a network of paths and places dedicated to performance and outdoor display. These are linked to the adjacent open spaces of the Colleges and the Old Campus, thereby bringing the arts more fully into the daily lives of non-arts students. The spaces are further unified by a palette of paving materials and landscape treatments.

CLIENT	<i>Yale University</i>
LOCATION	<i>New Haven, Connecticut</i>
PROJECT AREA	<i>17.8 acres</i>
ARCHITECT	<i>James Polshek &amp; Partners</i>



**CEDAR STREET STREETScape  
YALE SCHOOL OF MEDICINE**

This vital corridor is the pedestrian spine of Yale's School of Medicine. It is also both the vehicular arrival to the School's 'front door' and a major service artery. The street's prominence and use has been significantly intensified by the recent expansion of the University to the south with a major new medical research complex and the relocation of the Nursing School . Streetscape improvements were overdue.

Towers|Golde has redesigned the street to create an urbane environment that will encourage social use, facilitate service, improve safety, and dramatically enhance the image of this prestigious institution. The scheme is characterized by tree-flanked side-walks, decorative entry plazas, seating, and safer separation of vehicular and pedestrian traffic. Under-grounding of utilities and replacement of utilitarian street lights with historic style pedestrian fixtures will identify this as a special campus place and not just another public way.

CLIENT	<i>Yale University School of Medicine</i>
LOCATION	<i>New Haven, Connecticut</i>
SITE COST	<i>\$2.2 million</i>