



Judith Watts



F.L. Olmsted & Co.

**LANDSCAPE MASTER PLAN
SMITH COLLEGE**



The Smith College campus of today is almost five times larger than it was in 1892 when Frederick Law Olmsted developed its first landscape master plan. The challenge posed by the College was to expand Olmsted's historic vision, while enhancing the aesthetic, pedagogical and communal values of the institution.

Towers|Golde's plan, prepared with Cornelia Hahn Oberlander, proposes to achieve these goals through a strategic application of core planning principles expressed through a vocabulary of forms and materials. The Botanic Garden will be expanded to address ecological concerns and to include new areas for environmental studies. The campus gateways, its edges and its street crossings will be redesigned for visual identity, pedestrian safety and civic improvement.

Implementation of the plan has begun with several projects underway. Towers|Golde continues to serve the College as Campus Landscape Architect.

CLIENT	<i>Smith College</i>
LOCATION	<i>Northampton, Massachusetts</i>
PROJECT AREA	<i>127 acres</i>



Jim Gipe

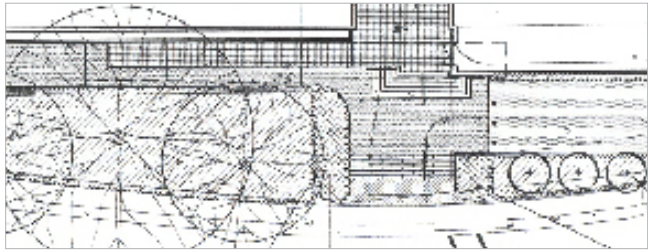
**LANNING FOUNTAIN
SMITH COLLEGE**

The restoration of Lanning Fountain, the creation of its plaza and the reconfiguration of both the surrounding pathways and plantings was the first phase of the implementation of the Smith College Landscape Master Plan by Towers|Golde with Cornelia Hahn Oberlander. Creation of places to encourage social interaction, clarification of pedestrian circulation and the visual integration of campus openspaces were all core elements of the plan and this project provided opportunities for all three.

T|G's design created a plaza with seating around the existing fountain, which served as a test for the site vocabulary suggested by the plan: paving materials and dimensions, lighting, site furnishings and planting strategies.

The fountain has been a huge success and has served as the prototype for all subsequent site improvement projects on campus.

CLIENT	<i>Smith College</i>
LOCATION	<i>Northampton, Massachusetts</i>
PROJECT AREA	<i>1 acre</i>

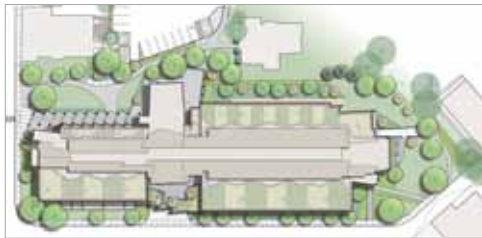


**BROWN FINE ARTS CENTER
SMITH COLLEGE**

The renovation and expansion of the Smith College Fine Arts Center seeks to transform this complex to visually redefine the arts at Smith and create a more welcoming and elegant campus gateway for the College. The Center is comprised of the Museum of Art, the Art History and Studio Art Departments, and the Art Library.

The existing structure's deficiencies required extensive improvements including replacement of the entire exterior envelope and thus all perimeter landscape development as well. Towers|Golde's site design, based on our campus Landscape Master Plan, significantly enhances the public and campus entries and creates a setting appropriate to one of the foremost Museums of Art and Art History/Art Studio programs in the country.

CLIENT	<i>Smith College</i>
LOCATION	<i>Northampton, Massachusetts</i>
PROJECT COST	<i>\$38 million</i>
SITE COST	<i>\$400,000</i>
ARCHITECT	<i>Polshek Partnership</i>



**FORD HALL
SMITH COLLEGE**

This engineering and molecular biology building is a visible statement of Smith’s leadership and innovation in science education. Technologically it is state of the art; aesthetically, it is a 21st century facility that is highly sympathetic to its largely Victorian context. While the current site is small, it is just the first phase in a far-reaching vision to develop new campus precinct that interweaves institutional and neighborhood character. This project also demonstrates the College’s commitment to sustainability and was designed as a teaching tool about sustainable building and site initiatives.

Towers|Golde assisted the Master Planning effort and subsequently designed this site to accommodate complex circulation patterns and complement the original Olmstedian campus design. Additionally, T|G collaborated with the design team and faculty in the creation of several green roofs, the implementation of storm and ground water management strategies, and the use of sustainable materials.

CLIENT	<i>Smith College</i>
LOCATION	<i>Northampton, Massachusetts</i>
PROJECT COST	<i>\$73 million</i>
SITE COST	<i>\$2.5 million</i>
ARCHITECT	<i>Bohlin Cywinski Jackson</i>